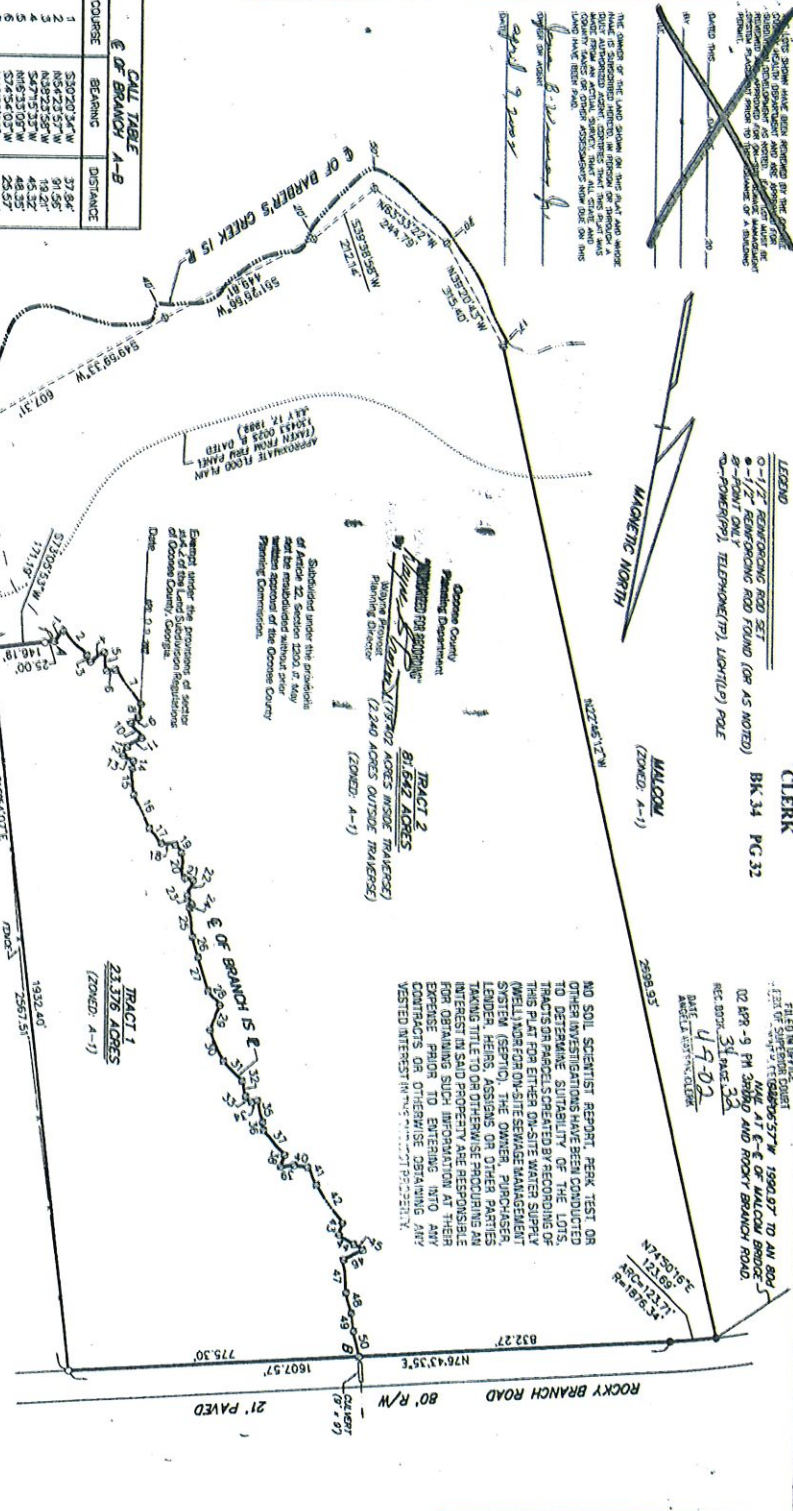


FILED
03:16 PM
04/09/2002
OCONEE COUNTY SUPERIOR COURT
ANGELA ELDER-JOHNSON
CLERK
BK 34 PG 32

LEGEND
 ○ 1/4" RECONSTRUCTED ROAD SET
 ● 1/4" RECONSTRUCTED ROAD FOUND (OR AS NOTED)
 - POINT ONLY
 ○ POWER(P), TELEPHONE(TP), LIGHT(L) POLE

THE OWNERS OF THE LAND SHOWN ON THIS PLAN AND WHOSE RIGHTS ARE INTERFERED BY THE PROPOSED TRAIL SHALL BE RESPONSIBLE FOR THE COST OF THE SURVEY AND THE COST OF THE RECONSTRUCTION OF THE ROAD. THE SURVEYOR'S OFFICE SHALL NOT BE RESPONSIBLE FOR THE COST OF THE RECONSTRUCTION OF THE ROAD OR FOR THE COST OF THE SURVEY.



CALL TABLE
E OF BRANCH 1-8

COURSE	BEARING	DISTANCE
1	S89°20'34"W	37.84'
2	N84°22'57"W	31.56'
3	N89°22'58"W	19.23'
4	S47°15'33"E	45.32'
5	S76°32'03"W	48.33'
6	N46°38'02"W	113.67'
7	N00°29'42"W	35.09'
8	N42°19'54"E	22.55'
9	N47°53'44"E	44.88'
10	N47°53'44"E	44.88'
11	N47°53'44"E	44.88'
12	N47°53'44"E	44.88'
13	N47°53'44"E	44.88'
14	N47°53'44"E	44.88'
15	N47°53'44"E	44.88'
16	N47°53'44"E	44.88'
17	N47°53'44"E	44.88'
18	N47°53'44"E	44.88'
19	N47°53'44"E	44.88'
20	N47°53'44"E	44.88'
21	N47°53'44"E	44.88'
22	N47°53'44"E	44.88'
23	N47°53'44"E	44.88'
24	N47°53'44"E	44.88'
25	N47°53'44"E	44.88'
26	N47°53'44"E	44.88'
27	N47°53'44"E	44.88'
28	N47°53'44"E	44.88'
29	N47°53'44"E	44.88'
30	N47°53'44"E	44.88'
31	N47°53'44"E	44.88'
32	N47°53'44"E	44.88'
33	N47°53'44"E	44.88'

COURSE	BEARING	DISTANCE
34	S57°00'25"W	15.65'
35	N23°59'53"W	57.95'
36	N87°07'33"W	21.22'
37	N87°07'33"W	21.22'
38	N87°07'33"W	21.22'
39	N87°07'33"W	21.22'
40	N87°07'33"W	21.22'
41	N87°07'33"W	21.22'
42	N87°07'33"W	21.22'
43	N87°07'33"W	21.22'
44	N87°07'33"W	21.22'
45	N87°07'33"W	21.22'
46	N87°07'33"W	21.22'
47	N87°07'33"W	21.22'
48	N87°07'33"W	21.22'
49	N87°07'33"W	21.22'
50	N87°07'33"W	21.22'



0 200 400
SCALE IN FEET

REFERENCES
 (1) MAP SURVEY FOR MARSHALL W AND LAURIE E WALCOW DATED OCT. 16, 1982.

SURVEY NOTES
 (1) EQUIPMENT USED: OF THEODOLITE AND EDM.
 (2) ANGULAR ERROR: OF PER STATION, ADJUSTED.
 (3) LINEAR CLOSURE: 1/15,000", BALANCED ARBITRARILY.
 (4) LINEAR PLAT CLOSURE: 1/299,592.
 (5) ALL OTHERS LINES WERE TAKEN FROM REF. 1.
 THIS DATE.

REFER TO: ADMINISTRATIVE SUBDIVISION PLAT
J.B. WEAVER

COUNTY	OCONEE	SCALE	1:311	STATE	GEORGIA
DATE	MAR. 8, 2002	SCALE	1" = 200'	DRAWN BY	STEPHEN
PREPARED BY	BOB WEAVER & ASSOCIATES, INC.	FILE NO.	28637-		
	3000 ALABAMA HWY. #2				
	ROCKWELL, GA.				

